

# A Year on the Ranch

Jason Banta, Ph.D., PAS  
Asst. Professor and Extension Beef Cattle Specialist  
Texas A&M AgriLife Extension Service  
Texas A&M University  
Overton, TX

1

What is the 1<sup>st</sup> thing  
that should be  
considered in  
ranch management?

2

Answer:  
Your Production  
Environment

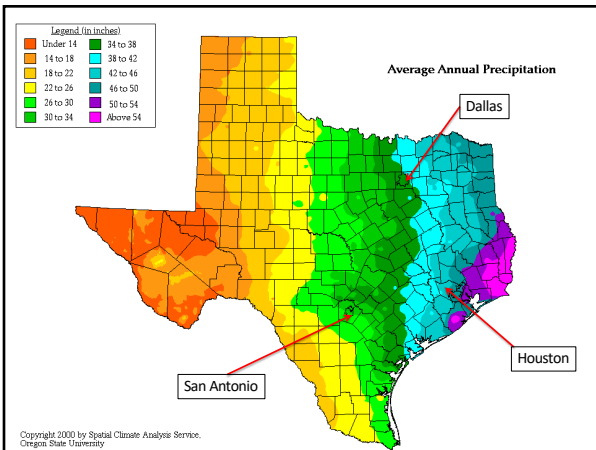
3

## Average Annual Nighttime Temperatures

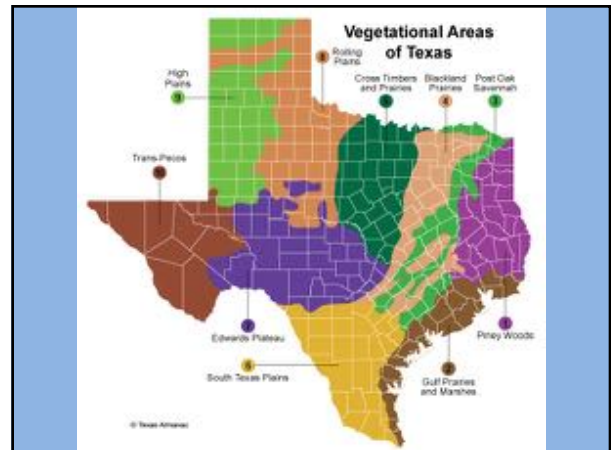


Source: National Climatic Data Center, U.S. Department of Commerce

4



5



6

Forage Management Plan

Breeding and Calving Season Plan

Herd Health Plan

Marketing Plan

7

## A Year on our Example Ranch

8

### Example Ranch

type: cow-calf

location: SE or East Texas

forage base: bermudagrass

9

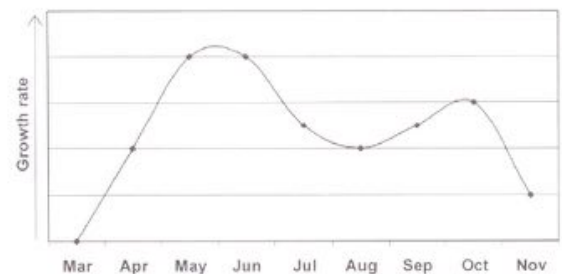
## Forage Management Plan

10

How long does  
bahia and  
bermudagrass grow?

11

### Utilizing Warm-Season Perennial Grasses (bermudagrass, bahiagrass, etc.)



12

How do we  
fill in the gaps?

13



14



15



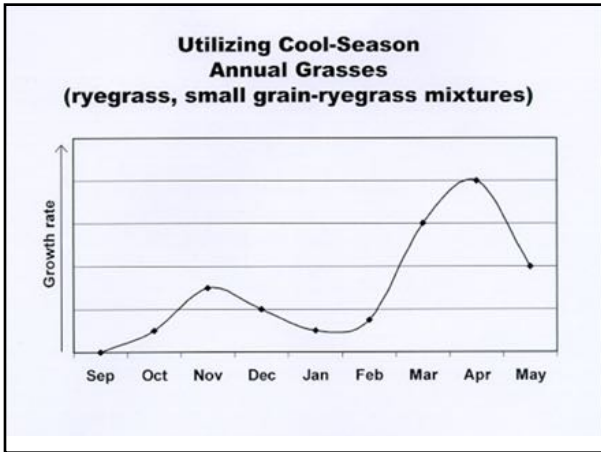
16

What about  
winter annuals?

17



18



19



20

**Example Ranch**

fertilize:

- April
- September
- December

start stockpiling forage: **Sept. 1**

plant winter pastures: **~October 15**

21

**Breeding and  
Calving Season Plan**

22

**When do you want  
your calves born?**

23

Fall

Winter

Spring

24

## Example Ranch

type: cow-calf

location: SE or East Texas

forage base: bermudagrass

calving season: winter

25

cows start calving: 1/10/21



start breeding: 3/31/20

26



calve heifers at 23-24 months old

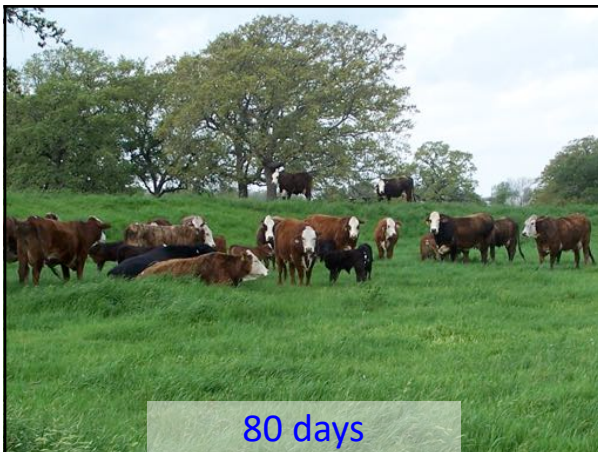
bred heifers at 13-14 months old

27

how often should she have a calf



28



80 days

29

How long should the breeding season be?

30

# Herd Health Plan

31

# Vaccinations

32

## Diseases Routinely Vaccinated For

### calves

- clostridial diseases
- IBR, BVD, PI-3, BRSV
- lepto

### replacement heifers & cows

- clostridial diseases
- IBR, BVD
- lepto & vibrio

consult with your veterinarian!!!!

33

## Vaccine Timing: Calves

### initial vaccination: 2-3 months

- clostridial
- IBR, BVD, PI3, BRSV
- lepto?

### booster vaccination: preweaning or postweaning?

- clostridial
- IBR, BVD, PI3, BRSV
- lepto?

34

## Vaccine Timing: Cows

### clostridial:

- flexible but precalving preferred

### IBR, BVD, PI3, BRSV:

- prebreeding

### lepto:

- prebreeding

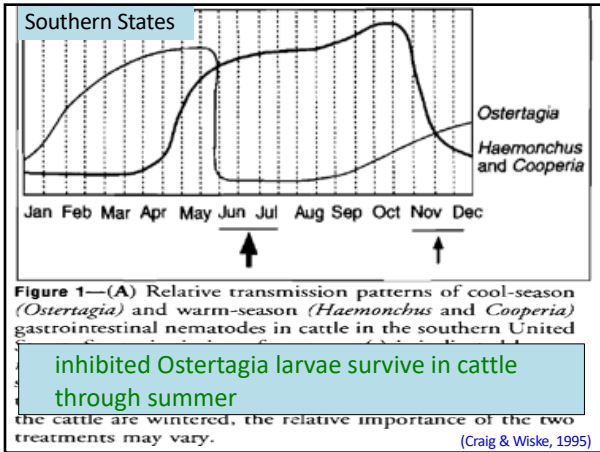
### vibrio:

- prebreeding

35

# Internal Cattle Parasites

36



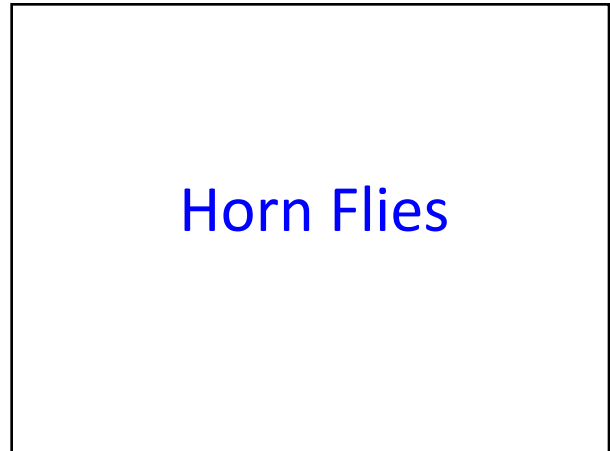
37



38



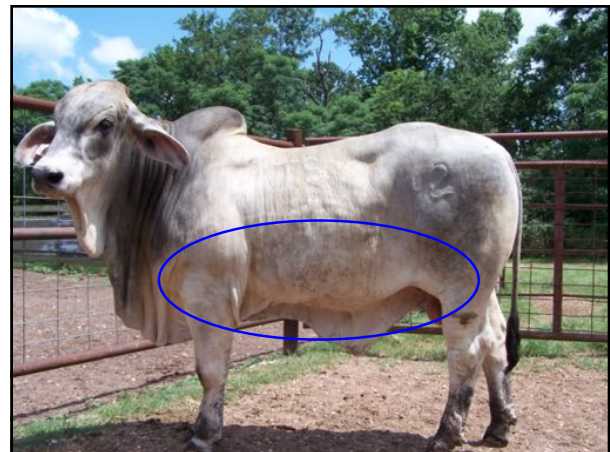
39



40



41



42

stockers and replacement heifers:

- 0.20 lbs/day
- 13.6%

calves:

- 0.09 lbs/day
- 4.3%

average of several studies

level of cattle gain impacts response

43

Example Ranch:

March:

- start topical horn fly control

April:

- branding time calf working

June:

- deworm cows and calves, leptos for cows

September:

- weaning time calf working

December:

- deworm and vaccinate cows

44

# Marketing Plan

45

## Methods of Weaning: Fence line

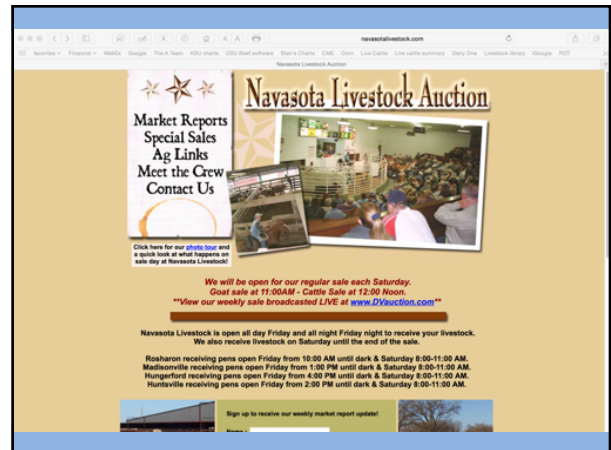


- pipe
- net wire
- good barbwire
- electric fence

46

# Selling Location

47



48

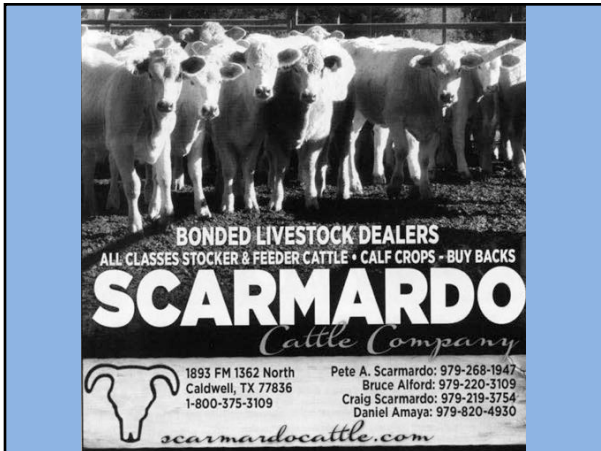




49



50



51



52

**January**


- calving starts
- wrap up grazing of stockpiled forages



53

**February**

- calving continues
- start grazing winter forages
- feed hay if needed



54

## March

- finish calving
- grazing winter forages
- watch for horn flies
- turn bulls out



55

## April

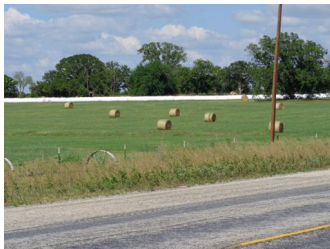
- grazing winter forages
- branding time calf working
- fertilize



56

## May

- transitioning from winter pastures to bermudagrass
- making hay or baleage



57

## June

- grazing bermudagrass
- deworm cows and calves



58

## July

- grazing bermudagrass
- pick bulls up



59

## August

- grazing bermudagrass



60

## September

- grazing bermudagrass
- start stockpiling forage
  - fertilize
- weaning time calf working
- wean calves



61

## October

- grazing bermudagrass
- sod seed winter pasture



62

## November

- graze stockpiled bermudagrass
- market calves



63

## December

- grazing stockpiled bermudagrass
- fertilize winter pasture
- work cows



64

<http://beef.tamu.edu>

<http://beeffax.tamu.edu>

[jpbanta@ag.tamu.edu](mailto:jpbanta@ag.tamu.edu)

65